

Product Details

PATTERN Lehariya Embroidery
COLOR Honey

BRAND

Clarence House

APPLICATION

Fabric

USES

Bedding, Drapery

CATEGORIES

Velvet / Grospoint, Crewels / Embroideries

BOOK

Indochine

COLORS

Gold, Pink

DESIGN TYPES

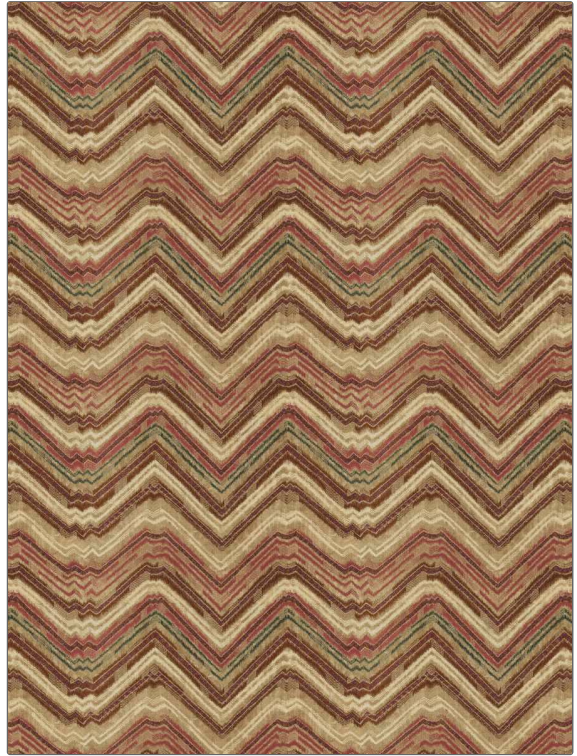
Geometric, Herringbone

SCALE

Medium

DIRECTION SHOWN

Up the Bolt



WIDTH

53.00 in (134.62 cm)

VERTICAL REPEAT

18.90 in (48.01 cm)

HORIZONTAL REPEAT

26.50 in (67.31 cm)

CONTENT

41% Cotton, 30% Viscose, 29% Polyester

BACKING

DOUBLE RUBS

Exceeds 51,000 Double Rubs (Wyzenbeek Method)

PRODUCT NUMBER

1572804

DATE BOOKED

08/2023

COUNTRY

India

CLEANING CODES

S

ADDITIONAL PRODUCT NOTES

Exclusive Pattern, Embroidered Textiles Are Not, Guaranteed For Precise Color, Matching And Colorfastness., Color Placement Of Embroidery, May Vary. All Measurements, Quoted For Repeats Are, Approximate.