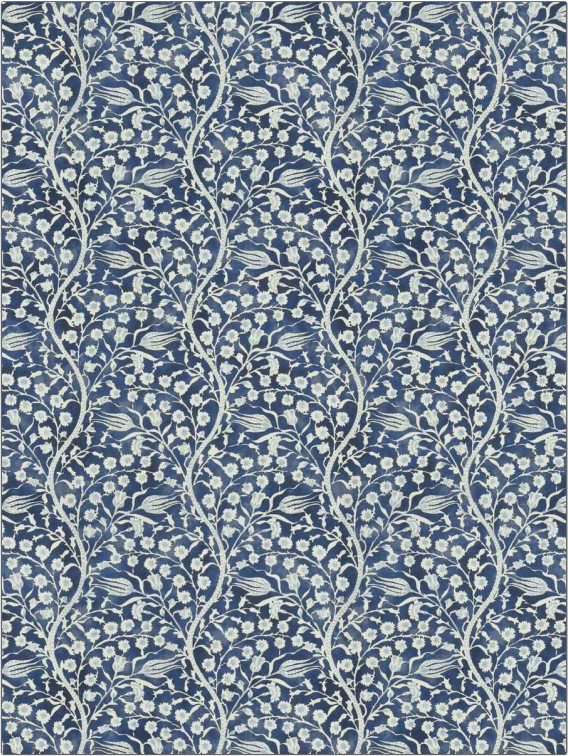


Product Details

| | | | |
|---|--|-------------------|--|
| PATTERN COLOR | | Cannanore Blue | |
| BRAND | | APPLICATION | |
| Clarence House | | Fabric | |
| USES | | CATEGORIES | |
| Bedding, Drapery, Multipurpose, Upholstery | | Prints, Linen | |
| BOOK | | COLORS | |
| Indochine | | Blue | |
| DESIGN TYPES | | SCALE | |
| Floral | | Large | |
| RAILOADED | | | |
| Not Railroaded | | | |



| | | | |
|----------------------|-------------------------|--|-----------------------|
| WIDTH | VERTICAL REPEAT | HORIZONTAL REPEAT | CONTENT |
| 54.00 in (137.16 cm) | 48.00 in (121.92 cm) | 54.00 in (137.16 cm) | 57% Linen, 43% Cotton |
| BACKING | FIRE CODES | DOUBLE RUBS | PRODUCT NUMBER |
| | UFAC Class I / NFPA 260 | Exceeds 12,000 Double Rubs (Wyzenbeek Method) | 1735105 |
| DATE BOOKED | COUNTRY | CLEANING CODES | |
| 08/2023 | France | S | |

| |
|-----------------------------------|
| ADDITIONAL PRODUCT NOTES |
| Ca Tb 117-2013, Exclusive Pattern |