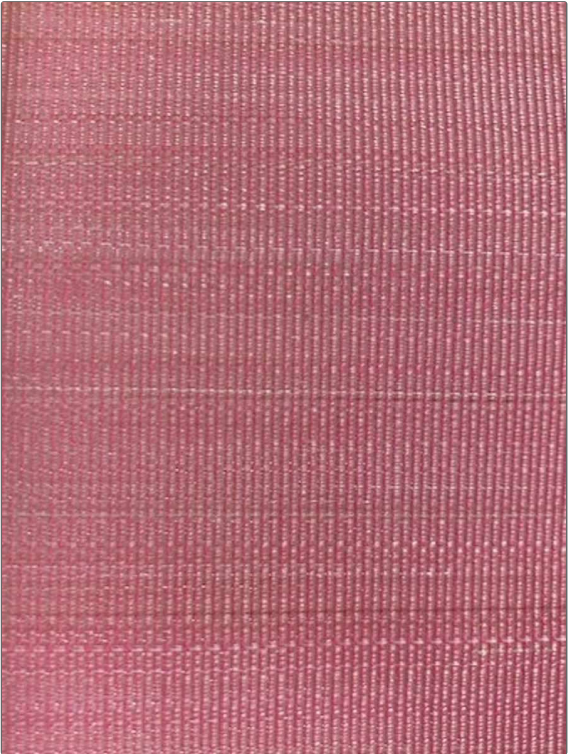


Product Details

**PATTERN** Paso 1  
**COLOR** Pale Azalea

<b>BRAND</b> Clarence House	<b>APPLICATION</b> Fabric
<b>USES</b> Upholstery	<b>CATEGORIES</b> Wovens
<b>BOOK</b> John Boyd	<b>COLORS</b> Pink
<b>DESIGN TYPES</b> Stripes	<b>SCALE</b> Small
<b>RAILROADED</b> Not Railroaded	



<b>WIDTH</b> 22.00 in (55.88 cm)	<b>VERTICAL REPEAT</b> 0.00 in (0.00 cm)	<b>HORIZONTAL REPEAT</b> 0.00 in (0.00 cm)	<b>CONTENT</b> 68% Horsehair, 32% Cotton
<b>BACKING</b>	<b>DOUBLE RUBS</b> Exceeds 50,000 Double Rubs	<b>PRODUCT NUMBER</b> 1745415	<b>DATE BOOKED</b> 10/2023
<b>COUNTRY</b> United Kingdom	<b>CLEANING CODES</b> S		

**ADDITIONAL PRODUCT NOTES**  
 Passes 50,000 Martindale Tst, Natural Fibers, Are Not Guaranteed For, Color Matching, Color, Fastness Or Durability.