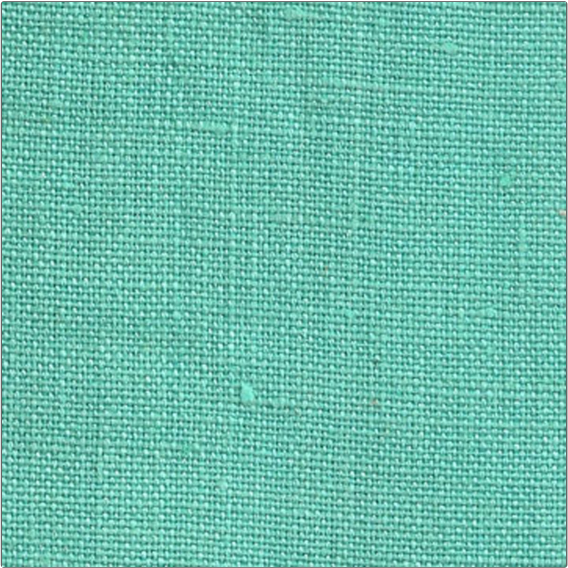


Product Details

PATTERN Dundee
COLOR Caribbean



| | |
|-----------------------------------|---------------------|
| BRAND | APPLICATION |
| Clarence House | Fabric |
| USES | CATEGORIES |
| Drapery, Multipurpose, Upholstery | Wovens |
| COLORS | DESIGN TYPES |
| Aqua / Teal | Solid |
| SCALE | RAILROADED |
| Medium | Not Railroaded |

| | | | |
|----------------------|--|--------------------------|----------------|
| WIDTH | VERTICAL REPEAT | HORIZONTAL REPEAT | CONTENT |
| 54.00 in (137.16 cm) | 0.00 in (0.00 cm) | 0.00 in (0.00 cm) | 100% Linen |
| BACKING | DOUBLE RUBS | PRODUCT NUMBER | COUNTRY |
| | Exceeds 6,000 Double Rubs (Wyzenbeek Method) | 1764454 | Brazil |

ADDITIONAL PRODUCT NOTES

Dry Clean Only