

Product Details

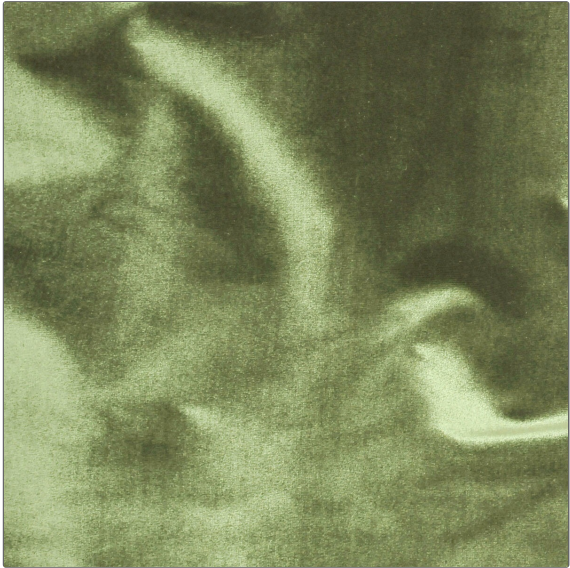
PATTERN Traviata
COLOR Sage

BRAND Clarence House
APPLICATION Fabric

USES Drapery, Multipurpose, Upholstery
CATEGORIES Silk, Velvet / Grospoint, Wovens

COLORS Green
DESIGN TYPES Solid

DIRECTION SHOWN
 Up the Bolt



WIDTH 55.00 in (139.70 cm)	VERTICAL REPEAT 0.00 in (0.00 cm)	HORIZONTAL REPEAT 0.00 in (0.00 cm)	CONTENT Face: 100% Silk, Backing: 51% Silk, 49% Cotton
BACKING	DOUBLE RUBS Exceeds 20,000 Double Rubs	PRODUCT NUMBER 1779505	COUNTRY Italy

ADDITIONAL PRODUCT NOTES
 Passes 20,000 Martindale Tst, Dry Clean Only