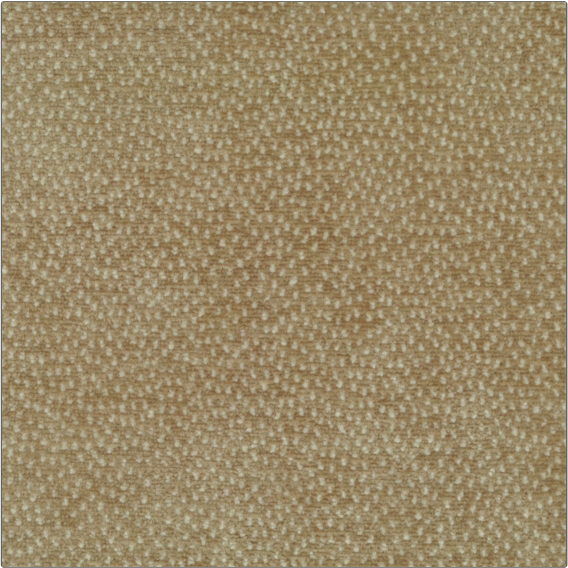


Product Details

| | |
|---------|----------|
| PATTERN | Camargue |
| COLOR | Ecru |

| | |
|-------------------|------------------------|
| BRAND | APPLICATION |
| Clarence House | Fabric |
| USES | CATEGORIES |
| Upholstery | Wovens |
| COLORS | DESIGN TYPES |
| Off White / Ivory | Animal, Toile, Chevron |
| RAILOADED | |
| Not Railroaded | |



| | | | |
|----------------------|----------------------------|-------------------|--|
| WIDTH | VERTICAL REPEAT | HORIZONTAL REPEAT | CONTENT |
| 54.00 in (137.16 cm) | 0.00 in (0.00 cm) | 0.00 in (0.00 cm) | 48% Viscose, 32% Cotton, 20% Polyester |
| BACKING | DOUBLE RUBS | PRODUCT NUMBER | COUNTRY |
| | Exceeds 21,000 Double Rubs | 1812402 | Italy |

| |
|--|
| ADDITIONAL PRODUCT NOTES |
| Passes 21,000 Martindale Tst, Dry Clean Only |