

Product Details

PATTERN Holmes
COLOR Olive

BRAND

Clarence House

APPLICATION

Fabric

USES

Drapery, Multipurpose,
Upholstery

CATEGORIES

Wovens

COLORS

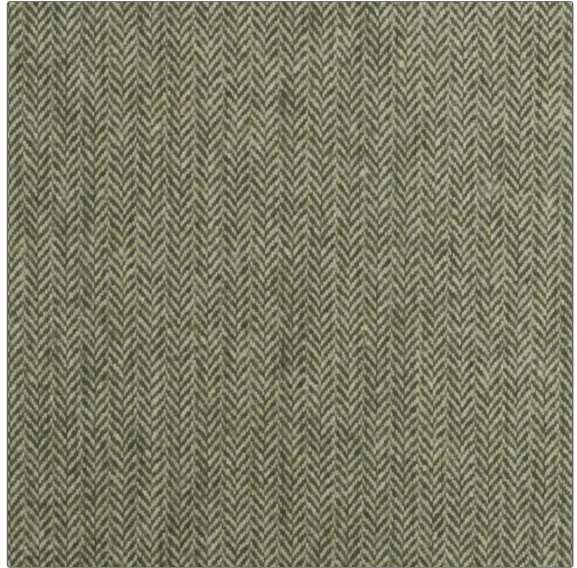
Green

DESIGN TYPES

Herringbone, Texture Plain,
Contemporary / Modern

RAILROADED

Not Railroaded



WIDTH

54.00 in (137.16 cm)

VERTICAL REPEAT

0.00 in (0.00 cm)

HORIZONTAL REPEAT

0.00 in (0.00 cm)

CONTENT

45% Acrylic, 25% Polyester,
30% Wool

BACKING

DOUBLE RUBS

Exceeds 25,000 Double
Rubs (Wyzenbeek Method)

PRODUCT NUMBER

1835502

COUNTRY

Italy

ADDITIONAL PRODUCT NOTES

Passes 25,000 Martindale Tst, Dry Clean Only