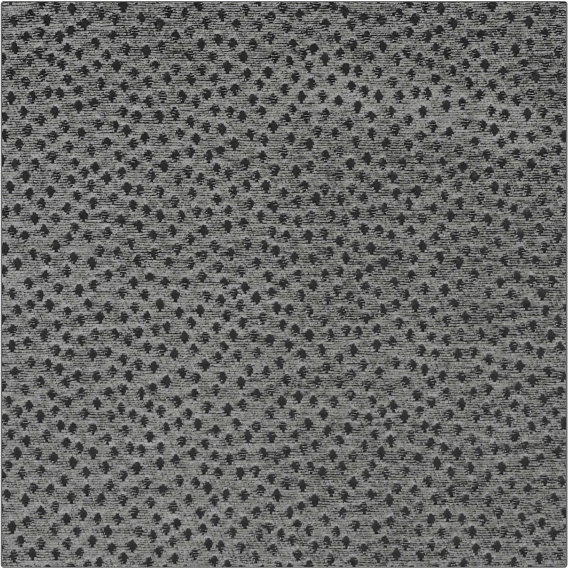


Product Details

PATTERN Faline
COLOR Mushroom



BRAND	APPLICATION
Clarence House	Fabric
USES	CATEGORIES
Upholstery	Wovens, Chenille
COLORS	DESIGN TYPES
Grey	Animal Skins, Dots / Circles
DIRECTION SHOWN	
Up the Bolt	

WIDTH	FINISH	VERTICAL REPEAT	HORIZONTAL REPEAT
54.00 in (137.16 cm)	Teflon® Finish	0.00 in (0.00 cm)	0.00 in (0.00 cm)
CONTENT	BACKING	DOUBLE RUBS	PRODUCT NUMBER
45% Cotton, 30% Viscose, 25% Polyester		Exceeds 20,000 Double Rubs (Wyzenbeek Method)	1874704
COUNTRY			
Italy			

ADDITIONAL PRODUCT NOTES

Teflon® Finish, Passes 20,000 Martindale Tst, Dry Clean Only