

Product Details

PATTERN Jakarta
COLOR Terracotta

BRAND

Clarence House

APPLICATION

Fabric

USES

Drapery, Multipurpose,
Upholstery

CATEGORIES

Silk, Wovens, Linen

COLORS

Orange / Spice

DESIGN TYPES

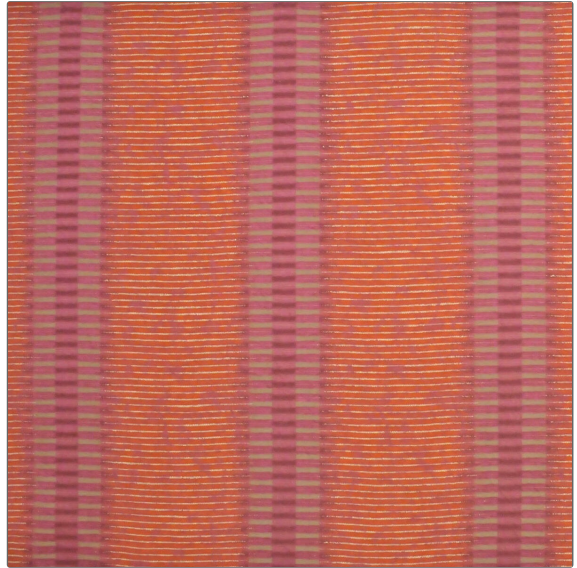
Global / Ethnic, Stripes

SCALE

Medium

RAILROADED

Not Railroaded



WIDTH

54.00 in (137.16 cm)

VERTICAL REPEAT

16.00 in (40.64 cm)

HORIZONTAL REPEAT

13.75 in (34.92 cm)

CONTENT

61% Linen, 28% Cotton,
11% Viscose

BACKING

PRODUCT NUMBER

1875201

COUNTRY

Italy

ADDITIONAL PRODUCT NOTES

Dry Clean Only, Refer To Image Under Sample