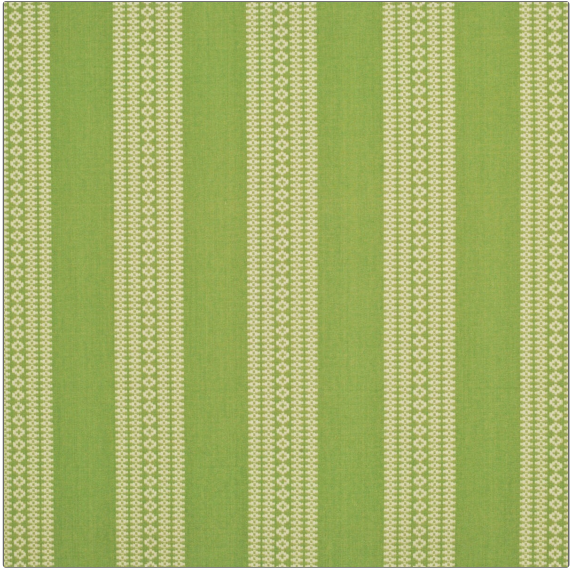


# Product Details

**PATTERN** Amagansett Stripe  
**COLOR** Leaf

<b>BRAND</b>	<b>APPLICATION</b>
Clarence House	Fabric
<b>USES</b>	<b>CATEGORIES</b>
Bedding, Drapery, Multipurpose, Upholstery	Wovens
<b>COLORS</b>	<b>DESIGN TYPES</b>
Green	Stripes, Tropical / Botanical
<b>SCALE</b>	<b>RAILROADED</b>
Small	Not Railroaded



<b>WIDTH</b>	<b>VERTICAL REPEAT</b>	<b>HORIZONTAL REPEAT</b>	<b>CONTENT</b>
54.00 in (137.16 cm)	0.00 in (0.00 cm)	6.00 in (15.24 cm)	100% Cotton
<b>BACKING</b>	<b>DOUBLE RUBS</b>	<b>PRODUCT NUMBER</b>	<b>COUNTRY</b>
	Exceeds 35,000 Double Rubs (Wyzenbeek Method)	1889108	India

**ADDITIONAL PRODUCT NOTES**  
 Passes 35,000 Martindale Tst, Dry Clean Only