

Product Details

PATTERN Borealis
COLOR Emerald Green

BRAND

Clarence House

APPLICATION

Fabric

USES

Drapery, Multipurpose,
Upholstery

CATEGORIES

Velvet / Grospoint,
Wovens

COLORS

Green

DESIGN TYPES

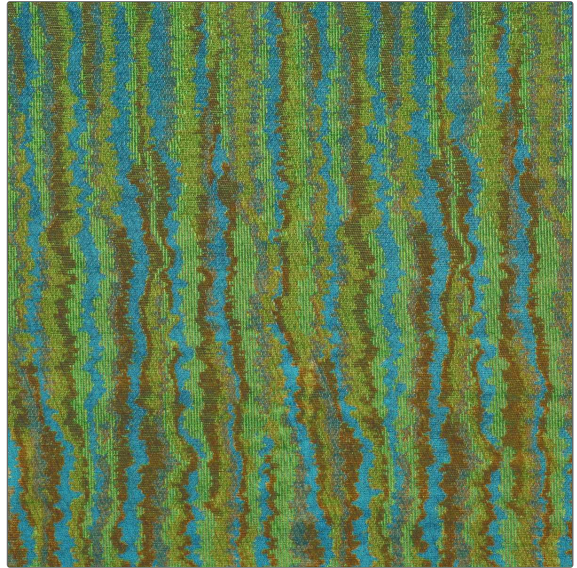
Chevron, Abstract

SCALE

Large

RAILROADED

Not Railroaded



WIDTH

52.00 in (132.08 cm)

VERTICAL REPEAT

32.00 in (81.28 cm)

HORIZONTAL REPEAT

13.25 in (33.66 cm)

CONTENT

Polyester: 100% Viscose,
Viscose: 100% Cotton

BACKING

DOUBLE RUBS

Exceeds 30,000 Double
Rubs (Wyzenbeek Method)

PRODUCT NUMBER

1889902

COUNTRY

India

ADDITIONAL PRODUCT NOTES

Passes 30,000 Martindale Tst, Dry Clean Only, Refer To Image Under Sample