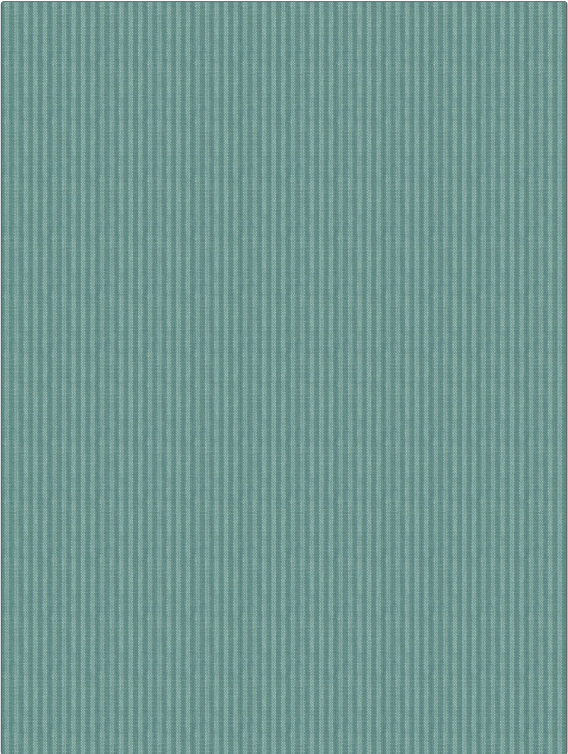


Product Details

PATTERN **New Leighton**
COLOR **Teal**



| | |
|--------------------------------|---------------------|
| BRAND | APPLICATION |
| Clarence House | Fabric |
| USES | CATEGORIES |
| Bedding, Drapery, Multipurpose | Wovens |
| COLORS | DESIGN TYPES |
| Aqua / Teal | Stripes |
| SCALE | RAILROADED |
| Small | Not Railroaded |

| | | | |
|----------------------|------------------------|---|-----------------------|
| WIDTH | VERTICAL REPEAT | HORIZONTAL REPEAT | CONTENT |
| 54.00 in (137.16 cm) | 0.00 in (0.00 cm) | 0.12 in (0.30 cm) | 100% Cotton |
| BACKING | FIRE CODES | DOUBLE RUBS | PRODUCT NUMBER |
| | UFAC Class I | Exceeds 51,000 Double Rubs (Wyzenbeek Method) | 1890319 |
| COUNTRY | CLEANING CODES | | |
| Portugal | S | | |

ADDITIONAL PRODUCT NOTES

Ca Tb 117-2013