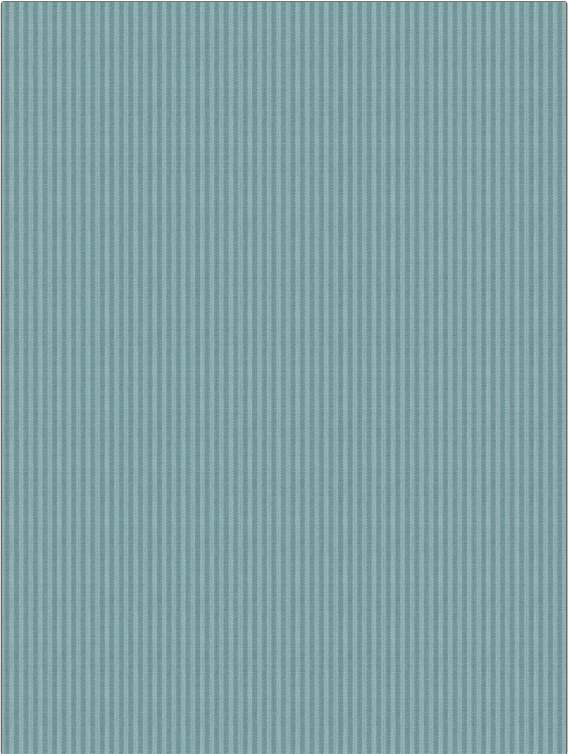


Product Details

PATTERN New Leighton
COLOR Calypso

| | |
|--------------------------------------------------|-------------------------------------|
| BRAND Clarence House | APPLICATION Fabric |
| USES Bedding, Drapery, Multipurpose | CATEGORIES Wovens |
| COLORS Aqua / Teal | DESIGN TYPES Stripes |
| SCALE Small | RAILROADED Not Railroaded |



| | | | |
|--------------------------------------|---------------------------------------------|------------------------------------------------------------------------|----------------------------------|
| WIDTH 54.00 in (137.16 cm) | VERTICAL REPEAT 0.00 in (0.00 cm) | HORIZONTAL REPEAT 0.12 in (0.30 cm) | CONTENT 100% Cotton |
| BACKING | FIRE CODES UFAC Class I | DOUBLE RUBS Exceeds 51,000 Double Rubs (Wyzenbeek Method) | PRODUCT NUMBER 1890320 |
| COUNTRY Portugal | CLEANING CODES S | | |

ADDITIONAL PRODUCT NOTES
 Ca Tb 117-2013