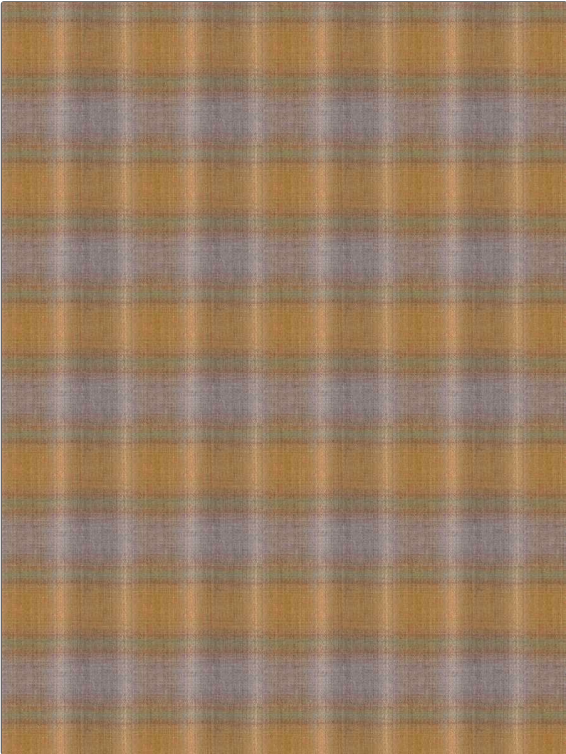


Product Details

PATTERN Hemingway
COLOR Plum / Ginger

BRAND	APPLICATION
Clarence House	Fabric
USES	CATEGORIES
Drapery, Multipurpose, Upholstery	Wovens
BOOK	COLORS
Clarence House Fall 2019	Burgundy
DESIGN TYPES	SCALE
Check / Plaid	Medium
DIRECTION SHOWN	
Up the Bolt	



WIDTH	VERTICAL REPEAT	HORIZONTAL REPEAT	CONTENT
56.00 in (142.24 cm)	7.00 in (17.78 cm)	6.25 in (15.88 cm)	92% Wool Staple Fiber, 8% Polyester Staple Fiber
BACKING	DOUBLE RUBS	PRODUCT NUMBER	DATE BOOKED
	Exceeds 12,500 Double Rubs	1900004	08/2019
COUNTRY			
Turkey			

ADDITIONAL PRODUCT NOTES
 Passes 12,500 Martindale Tst, Ca Tb 117-2013, Dry Clean Only