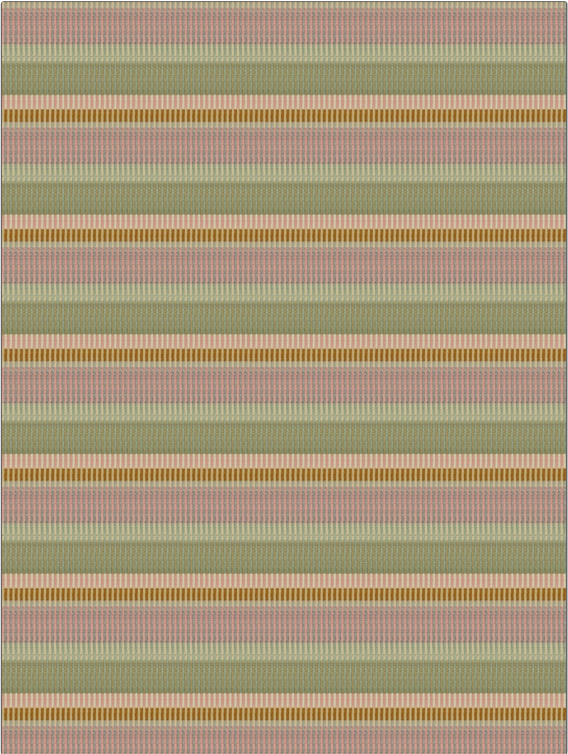


Product Details

PATTERN Zerhra
COLOR Aloe

BRAND	APPLICATION
Clarence House	Fabric
USES	CATEGORIES
Multipurpose, Upholstery	Wovens
BOOK	COLORS
Clarence House Fall 2019	Green
DESIGN TYPES	SCALE
Global / Ethnic, Stripes	Medium
DIRECTION SHOWN	
Up the Bolt	



WIDTH	VERTICAL REPEAT	HORIZONTAL REPEAT	CONTENT
54.00 in (137.16 cm)	6.50 in (16.51 cm)	0.25 in (0.64 cm)	71% Wool Staple Fiber, 29% Cotton Staple Fiber
BACKING	FIRE CODES	DOUBLE RUBS	PRODUCT NUMBER
	UFAC Class I / NFPA 260	Exceeds 35,000 Double Rubs (Wyzenbeek Method)	1900601
DATE BOOKED	COUNTRY		
08/2019	Turkey		

ADDITIONAL PRODUCT NOTES
 Passes 15,000 Martindale Tst, Ca Tb 117-2013, Dry Clean Only, Refer To Image Under Sample