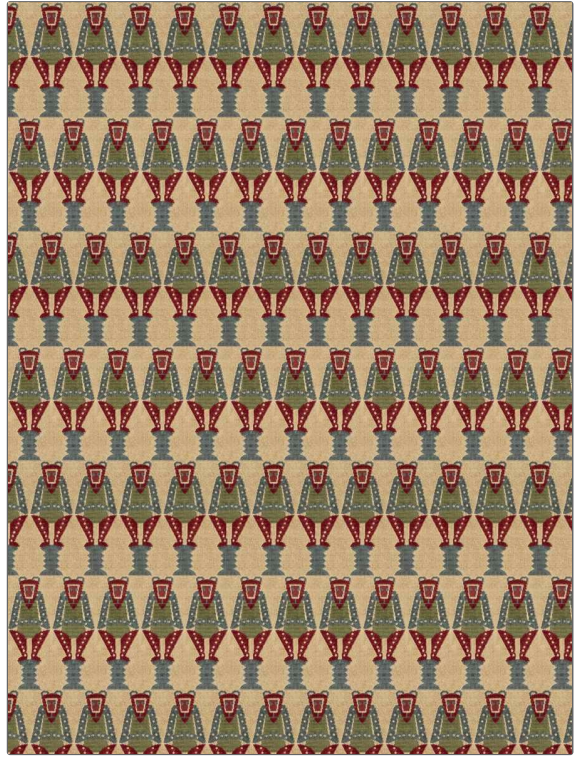


Product Details

| | |
|----------------------------------|-----------------------------------|
| PATTERN | Saru |
| COLOR | Multi |
| BRAND | APPLICATION |
| Clarence House | Fabric |
| USES | CATEGORIES |
| Upholstery | Velvet / Grospoint, Wovens, Linen |
| BOOK | COLORS |
| A La Japonaise | Multi-Color |
| DESIGN TYPES | SCALE |
| Animal, Global / Ethnic, Novelty | Medium |
| DIRECTION SHOWN | |
| Up the Bolt | |



| | | | |
|----------------------|-------------------------|---|-------------------------------------|
| WIDTH | VERTICAL REPEAT | HORIZONTAL REPEAT | CONTENT |
| 50.00 in (127.00 cm) | 23.50 in (59.69 cm) | 4.25 in (10.80 cm) | 82% Linen, 11% Cotton, 7% Polyester |
| BACKING | FIRE CODES | DOUBLE RUBS | PRODUCT NUMBER |
| | UFAC Class I / NFPA 260 | Exceeds 30,000 Double Rubs (Wyzenbeek Method) | 1926403 |
| DATE BOOKED | COUNTRY | CLEANING CODES | |
| 08/2024 | USA | S | |

| |
|-----------------------------------|
| ADDITIONAL PRODUCT NOTES |
| Ca Tb 117-2013, Exclusive Pattern |