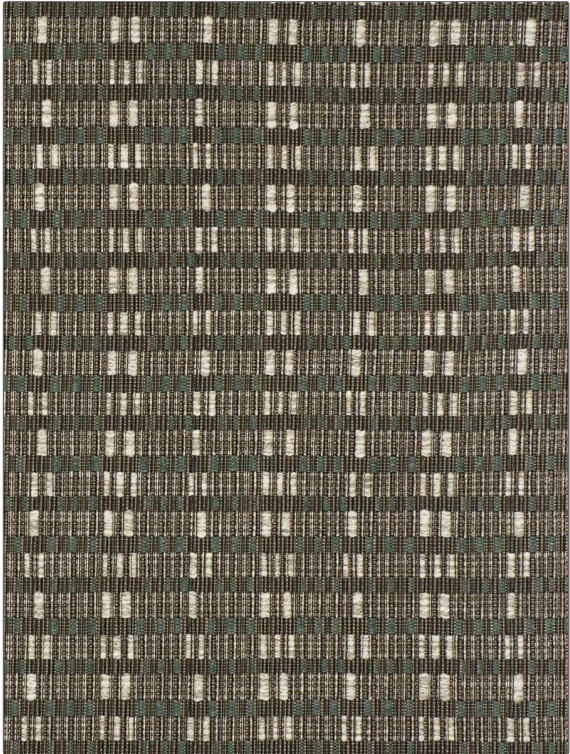


Product Details

PATTERN Rill Weave
COLOR Cedar

BRAND	APPLICATION
Clarence House	Fabric
USES	CATEGORIES
Upholstery	Raffia, Wovens
BOOK	COLORS
Africa	Brown, Aqua / Teal
DESIGN TYPES	SCALE
Stripes	Medium
DIRECTION SHOWN	
Up the Bolt	



WIDTH	VERTICAL REPEAT	HORIZONTAL REPEAT	CONTENT
53.00 in (134.62 cm)	1.70 in (4.32 cm)	6.30 in (16.00 cm)	29% Cotton, 27% Polyester, 23% Nylon, 15% Linen, 6% Lyocell
BACKING	FIRE CODES	DOUBLE RUBS	PRODUCT NUMBER
	UFAC Class I / NFPA 260	Exceeds 51,000 Double Rubs (Wyzenbeek Method)	2388105
DATE BOOKED	COUNTRY	CLEANING CODES	
02/2025	India	S	

ADDITIONAL PRODUCT NOTES
 Ca Tb 117-2013, Exclusive Pattern