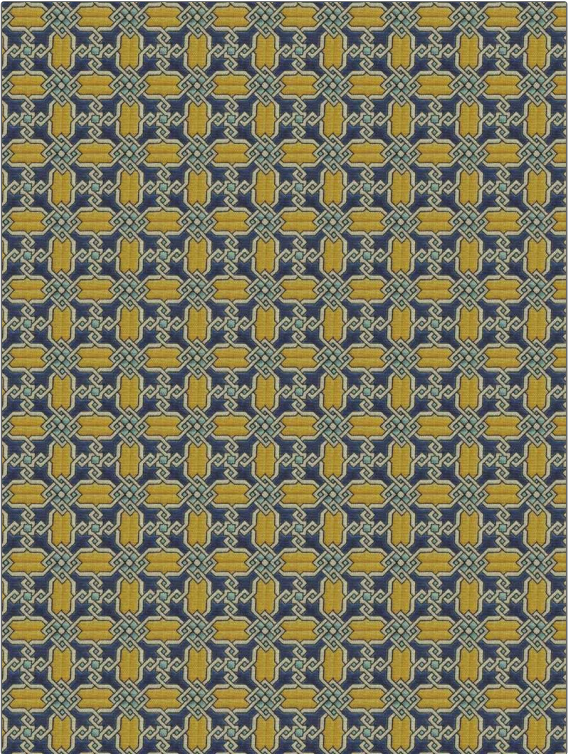


# Product Details

**PATTERN** Vietri  
**COLOR** Yellow Violet

<b>BRAND</b>	<b>APPLICATION</b>
Clarence House	Fabric
<b>USES</b>	<b>CATEGORIES</b>
Bedding, Drapery, Multipurpose, Upholstery	Prints, Linen
<b>BOOK</b>	<b>COLORS</b>
Clarence House Spring 2021	Lavender / Purple, Yellow
<b>DESIGN TYPES</b>	<b>SCALE</b>
Geometric	Small
<b>DIRECTION SHOWN</b>	
Up the Bolt	



<b>WIDTH</b>	<b>VERTICAL REPEAT</b>	<b>HORIZONTAL REPEAT</b>	<b>CONTENT</b>
53.00 in (134.62 cm)	3.25 in (8.26 cm)	3.25 in (8.26 cm)	100% Linen
<b>BACKING</b>	<b>FIRE CODES</b>	<b>DOUBLE RUBS</b>	<b>PRODUCT NUMBER</b>
	UFAC Class I / NFPA 260	Exceeds 15,000 Double Rubs (Wyzenbeek Method)	4178805
<b>DATE BOOKED</b>	<b>COUNTRY</b>	<b>CLEANING CODES</b>	
02/2021	Italy	S	

**ADDITIONAL PRODUCT NOTES**  
 Ca Tb 117-2013, Exclusive Pattern