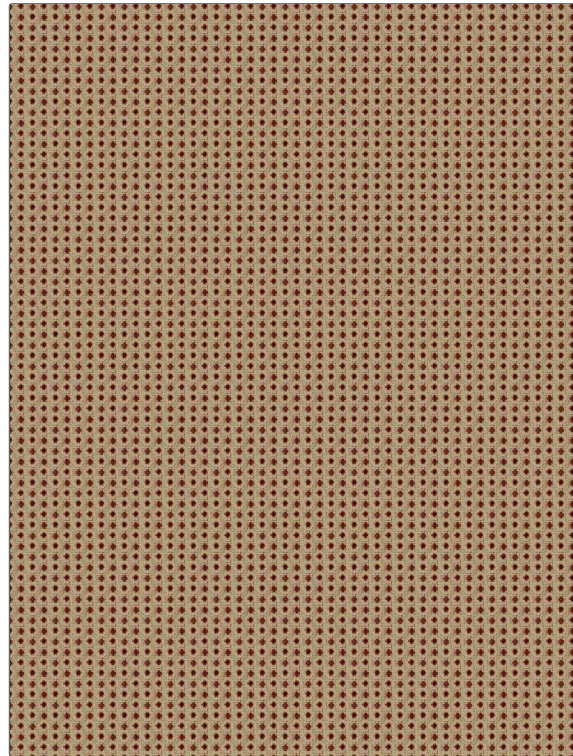


Product Details

PATTERN	Parity
COLOR	Crimson

BRAND	APPLICATION
Clarence House	Fabric
USES	CATEGORIES
Upholstery	Velvet / Grospoint, Linen
BOOK	COLORS
Clarence House Spring 2021	Pink
DESIGN TYPES	SCALE
Geometric, Small Scale Woven, Dots / Circles	Small
RAILROADED	
Not Railroaded	



WIDTH	VERTICAL REPEAT	HORIZONTAL REPEAT	CONTENT
53.00 in (134.62 cm)	1.00 in (2.54 cm)	1.10 in (2.79 cm)	55% Linen, 32% Cotton, 13% Polyester
BACKING	FIRE CODES	DOUBLE RUBS	PRODUCT NUMBER
	UFAC Class I / NFPA 260	Exceeds 18,000 Double Rubs (Wyzenbeek Method)	4179001
DATE BOOKED	COUNTRY	CLEANING CODES	
02/2021	Belgium	S	

ADDITIONAL PRODUCT NOTES
Ca Tb 117-2013, Exclusive Pattern