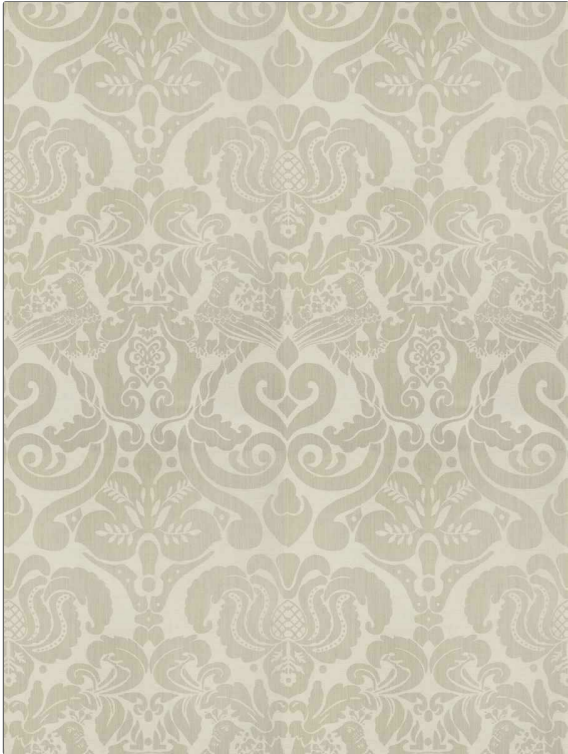


# Product Details

<b>PATTERN</b>	<b>Dama Oiseaux</b>
<b>COLOR</b>	<b>Linen</b>

<b>BRAND</b>	<b>APPLICATION</b>
Clarence House	Fabric
<b>USES</b>	<b>CATEGORIES</b>
Bedding, Drapery, Multipurpose, Upholstery	Silk
<b>BOOK</b>	<b>COLORS</b>
Clarence House Spring 2021	Linen
<b>DESIGN TYPES</b>	<b>SCALE</b>
Animal, Damask	Large
<b>RAILOADED</b>	
Not Railroaded	



<b>WIDTH</b>	<b>VERTICAL REPEAT</b>	<b>HORIZONTAL REPEAT</b>	<b>CONTENT</b>
51.00 in (129.54 cm)	41.00 in (104.14 cm)	25.50 in (64.77 cm)	65% Wool, 20% Nylon, 15% Silk
<b>BACKING</b>	<b>FIRE CODES</b>	<b>DOUBLE RUBS</b>	<b>PRODUCT NUMBER</b>
	UFAC Class I / NFPA 260	Exceeds 24,000 Double Rubs (Wyzenbeek Method)	4184303
<b>DATE BOOKED</b>	<b>COUNTRY</b>	<b>CLEANING CODES</b>	
02/2021	France	S	

<b>ADDITIONAL PRODUCT NOTES</b>
Refer To Image Under Sample., Ca Tb 117-2013, Exclusive Pattern, Refer To Image Under Sample