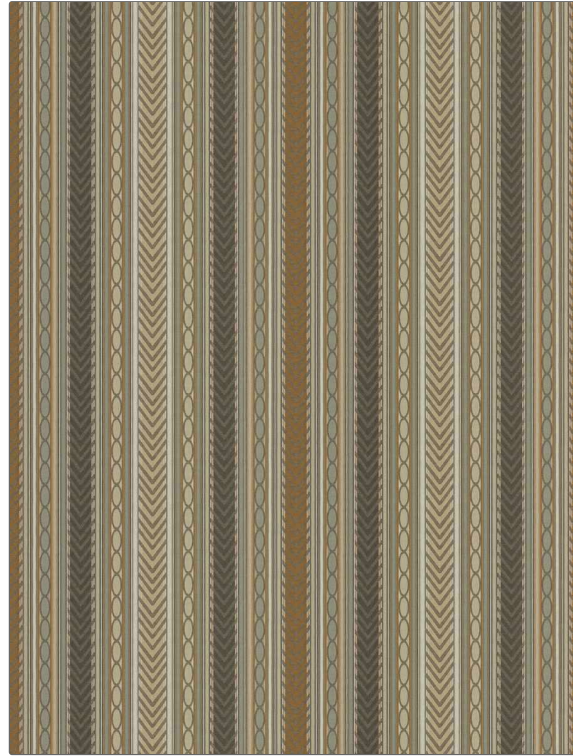


Product Details

PATTERN	Sevres Stripe
COLOR	Chestnut

BRAND	APPLICATION
Clarence House	Fabric
USES	CATEGORIES
Bedding, Multipurpose, Upholstery	Wovens
BOOK	COLORS
60th Anniversary Fabrics	Brown, Taupe / Tan, Metallic
DESIGN TYPES	RAILROADED
Herringbone, Jacquard Pattern, Stripes	Not Railroaded



WIDTH	VERTICAL REPEAT	HORIZONTAL REPEAT	CONTENT
55.00 in (139.70 cm)	4.00 in (10.16 cm)	27.50 in (69.85 cm)	33% Cotton, 24% Acrylic, 19% Linen, 15% Wool, 9% Polyester
BACKING	FIRE CODES	DOUBLE RUBS	PRODUCT NUMBER
	UFAC Class I / NFPA 260	Exceeds 30,000 Double Rubs (Wyzenbeek Method)	5894401
DATE BOOKED	COUNTRY	CLEANING CODES	
08/2021	Italy	S	

ADDITIONAL PRODUCT NOTES
Passes 15,000 Martindale Tst, Ca Tb 117-2013, Exclusive Pattern, Refer To Image Under Sample