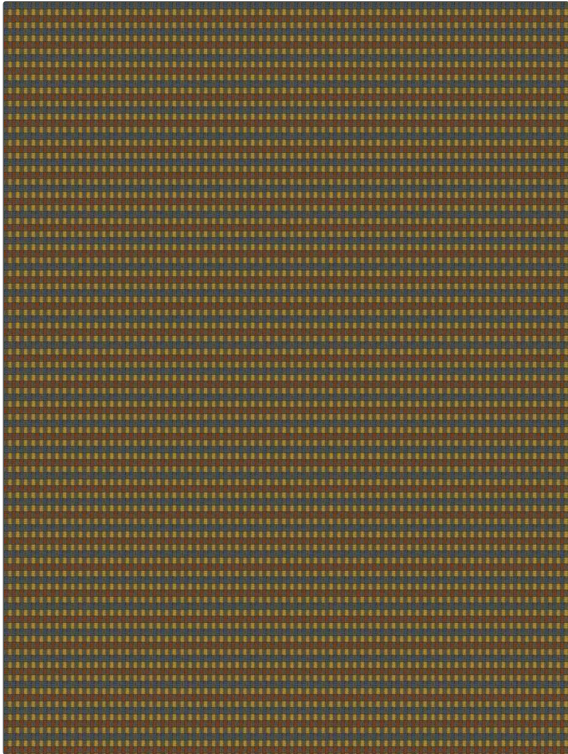


# Product Details

**PATTERN** OD Mondello  
**COLOR** Multi

|                            |                           |
|----------------------------|---------------------------|
| <b>BRAND</b>               | <b>APPLICATION</b>        |
| Clarence House             | Fabric                    |
| <b>USES</b>                | <b>CATEGORIES</b>         |
| Upholstery                 | Outdoor, Washable, Wovens |
| <b>BOOK</b>                | <b>COLORS</b>             |
| Les Tropicaux              | Multi-Color               |
| <b>DESIGN TYPES</b>        | <b>SCALE</b>              |
| Small Scale Woven, Stripes | Small                     |
| <b>RAILROADED</b>          |                           |
| Not Railroaded             |                           |



|                      |                         |   |                       |
|----------------------|-------------------------|---|-----------------------|
| <b>WIDTH</b>         | <b>VERTICAL REPEAT</b>  | <b>HORIZONTAL REPEAT</b>                      | <b>CONTENT</b>        |
| 55.00 in (139.70 cm) | 0.70 in (1.78 cm)       | 0.50 in (1.27 cm)                             | 100% Polypropylene    |
| <b>BACKING</b>       | <b>FIRE CODES</b>       | <b>DOUBLE RUBS</b>                            | <b>PRODUCT NUMBER</b> |
|                      | UFAC Class I / NFPA 260 | Exceeds 45,000 Double Rubs (Wyzenbeek Method) | 8373906               |
| <b>DATE BOOKED</b>   | <b>COUNTRY</b>          | <b>CLEANING CODES</b>                         |                       |
| 06/2022              | Italy                   | WASHABLE                                      |                       |

**ADDITIONAL PRODUCT NOTES**  
 Passes 60,000 Martindale Tst, Indoor / Outdoor, 1,500 Hours Light Fastness, Ca Tb 117-2013, Do Not Dry Clean, Washable